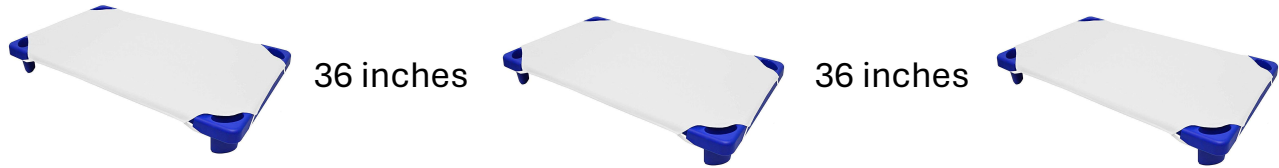


Nap Spacing and Storage

Spacing of Cots, Mats, or Cribs

Cots, mats, or cribs should be spaced at least 36 inches apart to reduce the spread of germs and diseases.



Storage of Nap Materials and Nap Related Issues

Nap related beddings such as cots, mats, linens, and blankets should be stored in a manner to prevent contamination issues.

Quality Practices

- Store linens and blankets in a manner where they are not touching.
- Store mats with a solid barrier between so that floor sides do not touch sleep surfaces.
- Place appropriately sized sheets or linen on individual cots, mats, or cribs.
- Ensure linens and bedding equipment are clean and sanitary.
- Store cots and mats in a sanitary location.

